

# Program transmission software for P!MOT

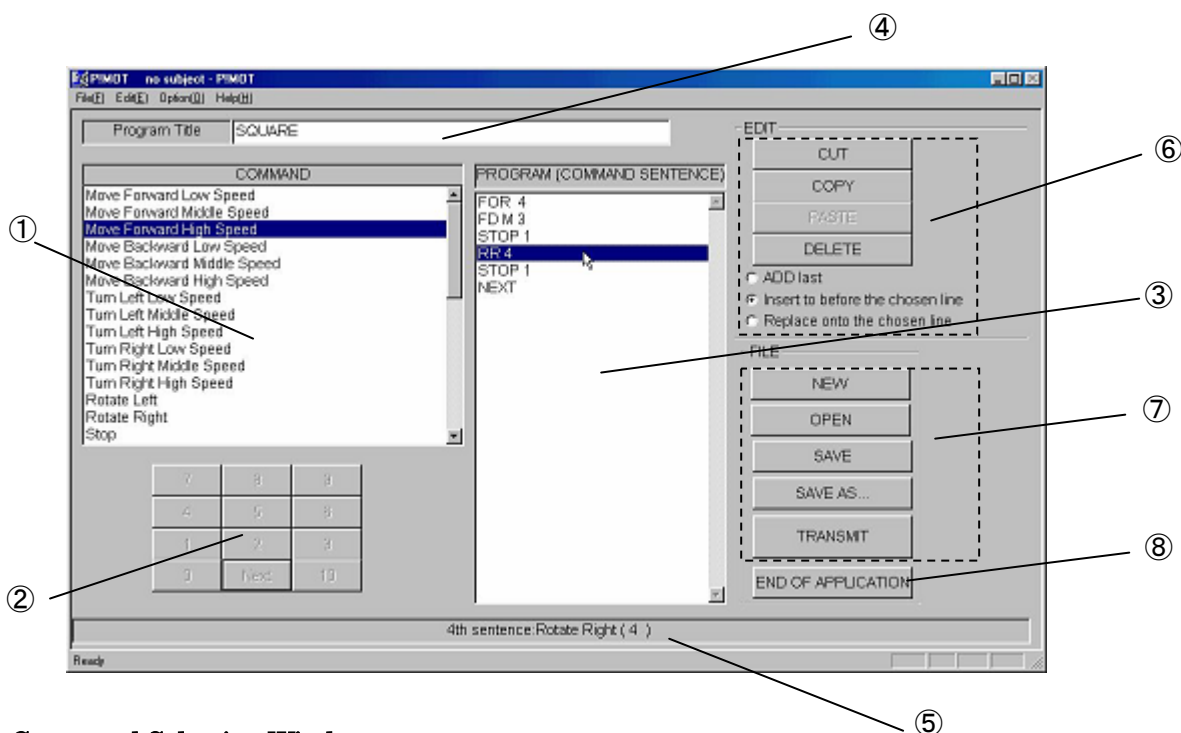
## 【Followings are required to transmit program to the P!MOT】

- P!MOT (MR-9762E,MR-9762E)
- Software (you can download free P!MOT software from <http://www.elekit.co.jp> )
- Personal Computer ※not included
- Interface Card (IF-96E) ※not included
- Printer Cable ※not included

## 【Features】

- The keyboard of P!MOT can be programmed. Moreover, you can program P!MOT by personal computer by using this software. You can make a program with your confirmation.
- Since a personal computer is used, the made program can also be saved and edited can also be simplified later.
- The programming method has the command displayed, and a number key only needs to be clicked with a mouse.
- Since it also has the display part which explains the made program in simply, even beginning programmers can be at ease.

## 【Screen】



### ① Command Selection Window

The command which operates P!MOT is displayed. It is the window which chooses the command made into P!MOT.

### ② Value Key

It can be pressed after choosing a command when it is necessary. It inputs time of operation, the number of times of a repetition, a label, etc.

### ③ Program Display Window

The program currently created is displayed. A command can be chosen or the program, which pushed and made the value key, can check what has become.

### ④ Program Title Entry Bar

It can be used to select the command, and name the program that you made by value keys.

### ⑤ Program Explanation Bar

A program display window explains the selected line.

### ⑥ Edit Button

It is used when correcting and adding the program currently made.

### ⑦ File Button

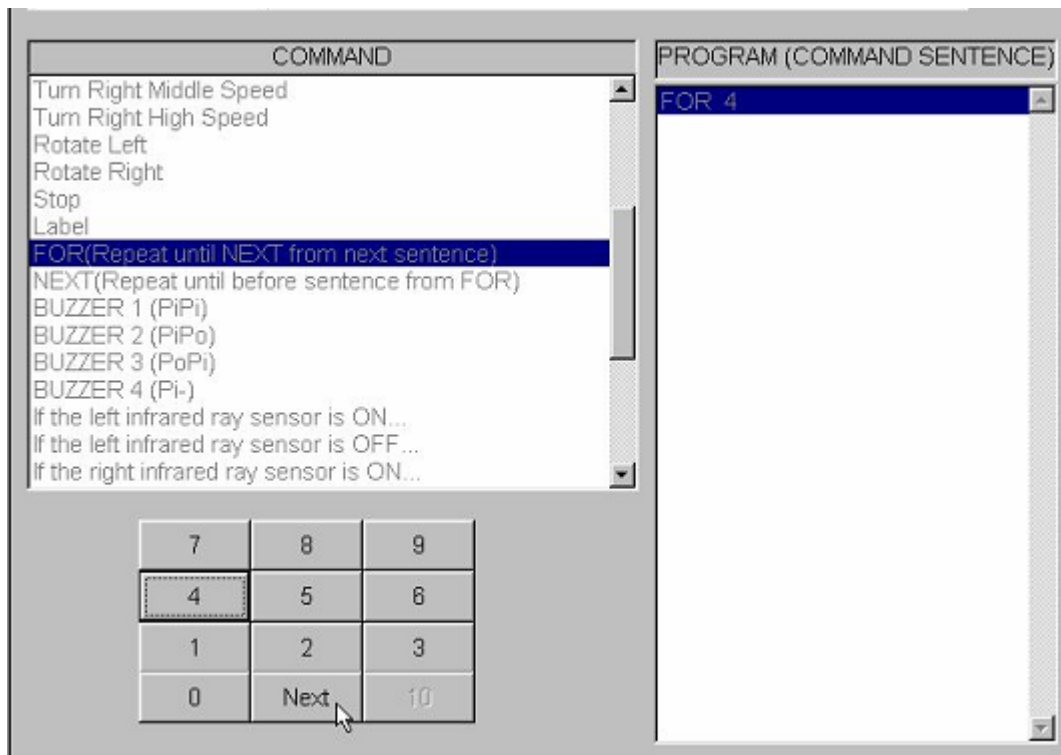
It is used when opening the saved program or naming and saving a file name.

## 【How to Program】

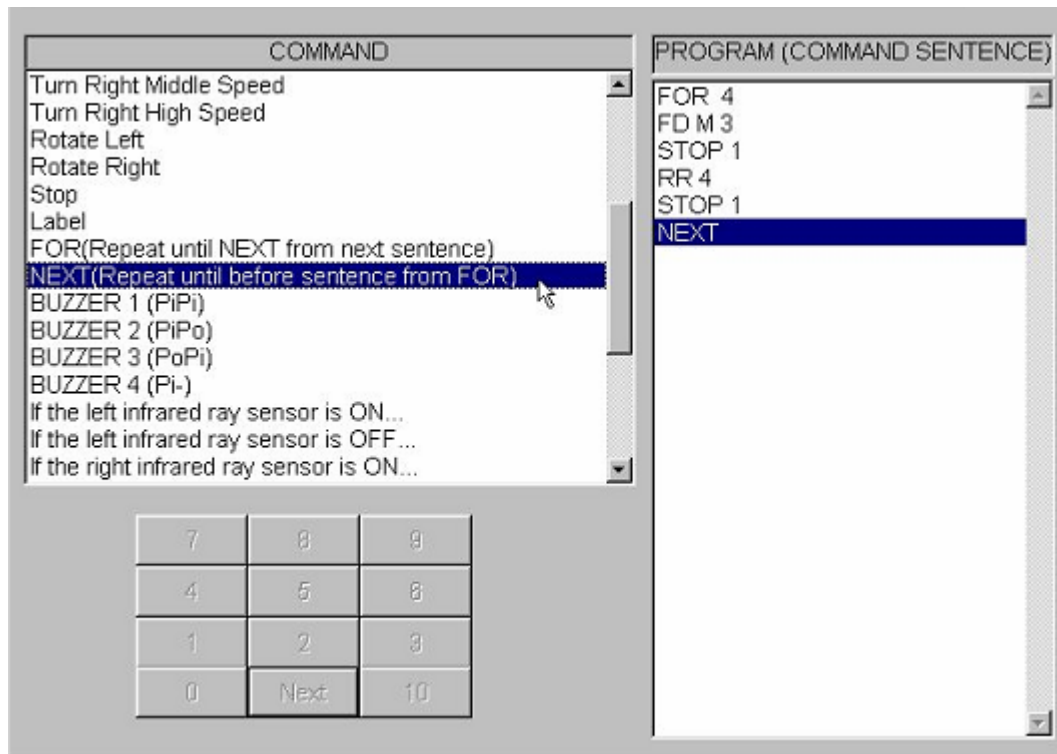
Make a program that P!MOT moves as squarely by using FOR-NEXT to explain the method of program.

Set FORWARD as middle speed "2", and right rotation as "4".

- ① Double click the "FOR (Repeat from next sentence to NEXT)" from the Command Window. Next, click "4"→"NEXT" from value keys. It will be displayed in the Program Display Window as follow.。



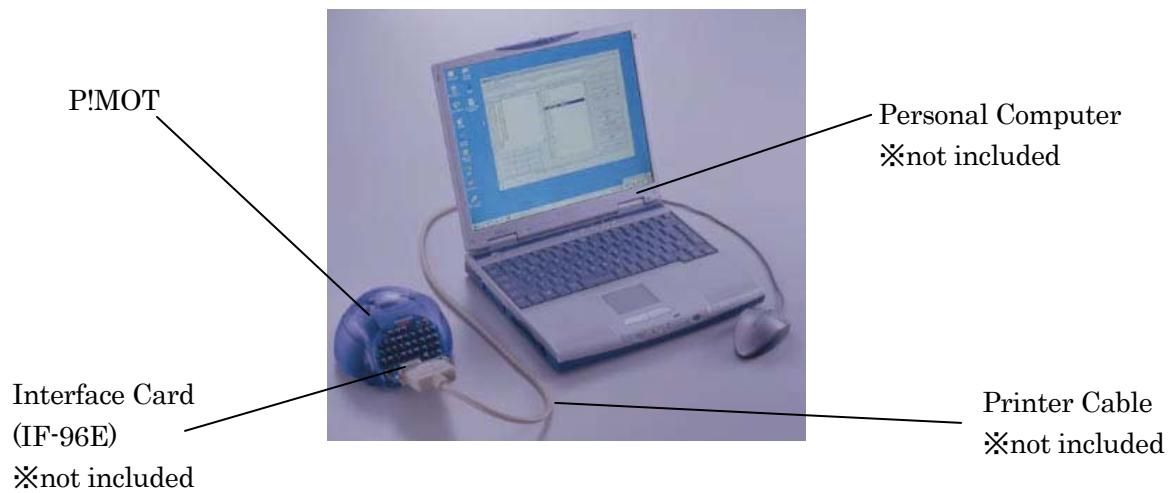
- ② Click in order as follow. (Double click for command.)  
 "FORWARD MIDDLE SPEED"→"2"→"NEXT (in value key)"→"STOP"→"Rotate Right"→  
 "4"→"NEXT (in value key)"→"STOP"→"1"→"NEXT (in value key)"→"Rotate Right"→"4"→  
 "NEXT (in value key)"→"STOP"→"1"→"NEXT (in value key)"→"NEXT (Repeat from "FOR"  
 to last sentence)"



The program that P!MOT moves squarely is completed.

**【Transmit your program to the P!MOT】**

- ① Connect P!MOT, Interface Card (IF-96E), and Personal Computer as following picture.  
 Connect printer cable to the printer port of your personal computer.  
 ※Desktop type personal computer is also possible.



② Set P!MOT as Program Receive Mode.

Press in order [RESET]-[MODE]-[0] to switch to Program Receive Mode. Then LED-L(green) and LED-R(red) will blink. When LED-L and LED-R blink repeatedly, P!MOT is on Program Receive Mode.

③ Next, click "TRANSMIT" in P!MOT software.

When P!MOT's LED-L and LED-R light out, transmission is completed.

④ Remove the Interface Card (IF96-E) from P!MOT. Then press "MODE(RUN)" button in keyboard of P!MOT, P!MOT starts to move as you operated.