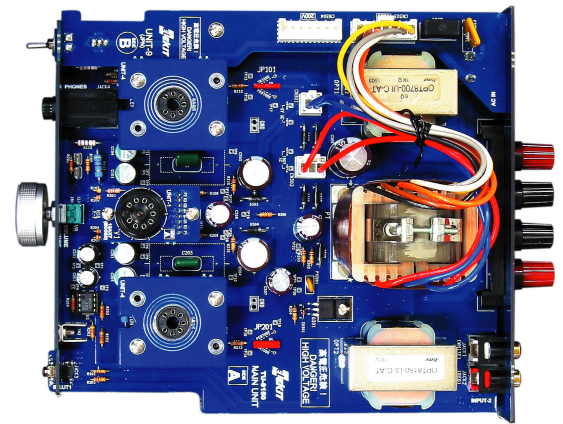


Full of customizing options ! Compact tube amp with a headphone feature



TU-8150 is a single tube amp kit with 6005W, a highly reliable variant of 6AQ5, and a very powerful output tube despite MT-tube. Various features to enjoy the difference of the sound, such as selectable connection modes, tube rolling, exchanging OPamps - Experience the real thrill of tube amplifiers!

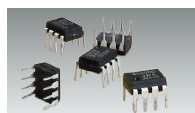
■ Enjoy Tube Rolling

6AQ5 is a 7-pin MT tube, and it has the same characteristics as 6V6, an octal-base GT tube or metal tube. TU-8150 corresponds to this 8-pin 6V6 tube by exchanging the sub PCBs with tube socket so that users can enjoy the difference of sound between 6AQ5 and 6V6.



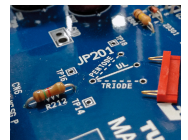
■ Enjoy OPamp Rolling

TU-8150 contains a preamplifier stage configured with an Opamp to resolve the problem of low gain when connected to a portable audio player/device. The Opamp is installed to an IC socket so that it can be easily exchanged with other commercially available Opamps. Each Opamp gives different taste in sound, so that users can take pleasure in searching a sound of your choice.



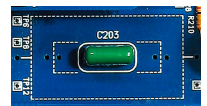
■ 3 connection modes

3 types of connection modes, Ultra linear, Triode, and Pentode, can be selected simply by moving the jumper plug on the PCB for each channel.



■ Ample space for larger capacitors

Coupling capacitors are one of those that affect the sound. For TU-8150, the PCB is designed with ample space around them, so that users can exchange those coupling capacitors with different ones of larger size.



* Maximum size : 36mm in length x 19mm in diameter

■ Headphone terminal equipped

TU-8150 is equipped with a headphone jack. Moreover, the power to drive a headphone/earphone can be selected from 3 options by the combination of 2 resistors per channel. You can select a combination most suitable for your own headphone/earphone.

TU-8150 (6AQ5 SINGLE TUBE AMP KIT) Specifications

- Stock tube : 6005W x 2pcs, 12AX7 x 1pc
* 6005W is a highly reliable variant of 6AQ5
- Rated output : UL connection 2.9W + 2.9W
Pentode connection 2.9W + 2.9W *8 ohm load for all cases
Triode connection 1.6W + 1.6W
- Rated input : 140mV (INPUT-1) 410mV (INPUT-2) * UL connection
- Residual noise : 75μV rms (IHF-A)
- Frequency response : 20Hz-50kHz (-3dB)
- Input terminal : INPUT-1 (Front) 3-pole mini jack (Priority)
INPUT-2 (Rear) RCA jack
- Output terminal : SP output terminal (4-8Ω) Binding terminal (banana plug usable)
HP terminal (8-600Ω 6.3mm standard jack (Not balanced)
- Power voltage : 50/60Hz, AC115V and 230V for oversea version (2-slot inlet)
- Power consumption : 28W *No signal
- Dimensions : W210 x H122.5 x D252mm (incl.projections)
- Weight : Approx.3.5kg (assembled, excl. power cord)



The specifications of the product are subject to change without prior notice.
The color of the product in this document may look different from the actual product.

EK JAPAN's website: <http://www.elekit.co.jp>

EK JAPAN CO.,LTD.
Address: Tofuro-minami 2-19-30, Dazaifu-shi,
Fukuoka, 818-0105, Japan
Phone : +81-92-923-8235
Fax : +81-92-923-8237
E-mail : info@elekit.co.jp